



imla

International
Master of Landscape
Architecture

Broaden your horizon:
Welcome to the internationally recognised
Master's programme in Landscape Architecture



IMLA programme cooperation



The **International Master's Programme in Landscape Architecture** (known as the **IMLA** programme for short) is a cooperation between two renowned universities in Germany:

- **Nürtingen-Geislingen University (HfWU)**
in Nürtingen (Baden-Württemberg)
- **Weihenstephan · Triesdorf University of Applied Sciences (HSWT)**
in Freising (Bavaria)



Hochschule für
Wirtschaft und Umwelt
Nürtingen-Geislingen



WEIHENSTEPHAN · TRIESDORF
University of Applied Sciences

Location of the IMLA partner universities



The location of studies alternates annually between Nürtingen and Freising-Weihenstephan – depending on the year of the application

- Nürtingen-Geislingen University of Applied Sciences (HfWU) near Stuttgart (Baden-Wuerttemberg)
- Weihenstephan · Triesdorf University of Applied Sciences (HSWT) near Munich (Bavaria)



IMLA programme directors and coordinators



Nürtingen-Geislingen University (HfWU)

Prof. Dr. Roman Lenz
IMLA Programme Director



Dr. Ellen Fetzer
IMLA Programme Coordinator



Weihenstephan · Triesdorf University of Applied Sciences (HSWT)

Prof. Ingrid Schegk
IMLA Programme Director



Stefanie Gruber
IMLA Programme Coordinator



... means landscape unlimited



Definition of Landscape Architecture



IMLA follows the definition coined by ECLAS, the European Council of Landscape Architecture:

‘Landscape architecture as a field of professional activity, and an academic discipline, is concerned with the shaping of landscapes at various scales.

Core competences of landscape architecture centre on the process of intervention in landscapes to create new or revitalised places, by means of landscape planning, design and management, as well as by project implementation.’

Tuning Document, 2011



What does the programme offer?



Planning and design in Europe and beyond:

- Broaden your horizon in international contexts
- Learn about different (planning) cultures
- Develop your self-confidence



What does the programme offer?



Preparation for management functions:

- Organisational foresight, team building and leadership in projects
- Project and process management
- Public relations, communication and participation



What does the programme offer?



Working efficiently in (interdisciplinary and intercultural) teams:

- Teamwork and interdisciplinarity, intercultural communication
- Time management and work flow
- Planning and design methods and international approaches



What does the programme offer?



Creating ideas and solutions for landscapes throughout Europe:

- Current project tasks in different contexts
- Intensive studio work and landscape architecture research
- Application and development of digital technologies and tools



Asif Adnan & Abhishek Passan:
An impulse with conundrum:
A redefined choreography for Arklow,
Masterthesis 2020

Course contents



PPM

IT

PDM

IPD

Planning and Project Management

Information Technologies

Planning and Design Methods

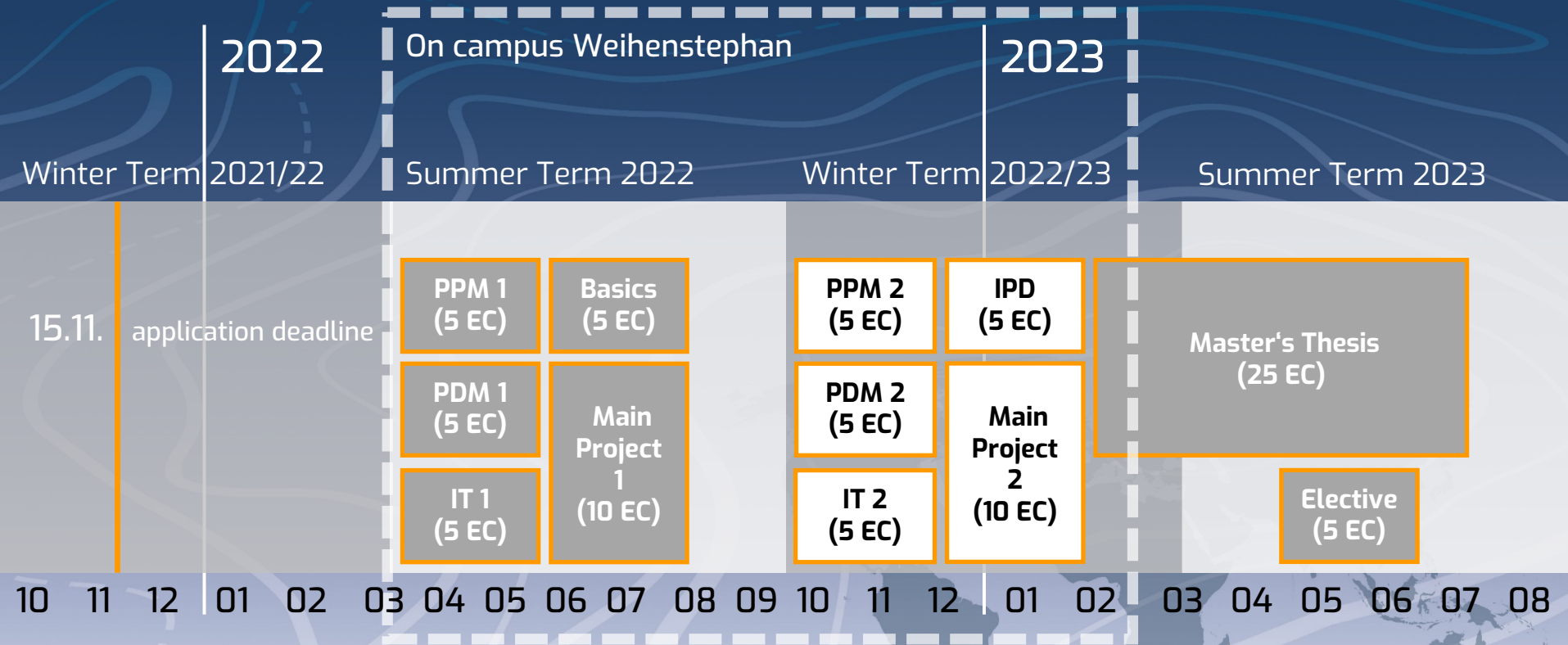
International Planning and Design

Semester 3: Master Thesis and Elective

Semester 1 + 2 Projects and Design Studios

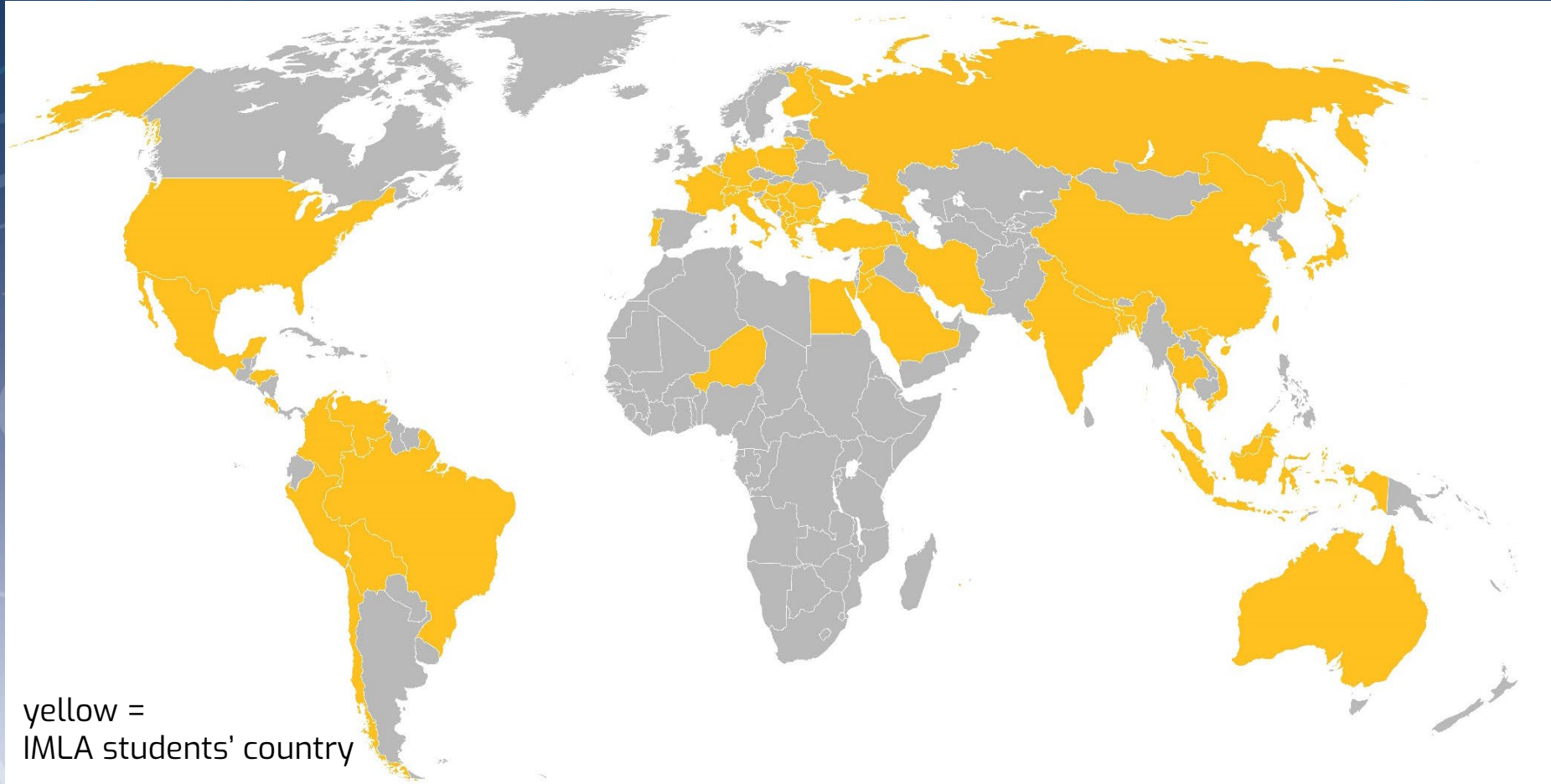
Theoretical basics – 4 pillars

Programme 2022 - 2023



Students with a 3-year degree or a degree other than Landscape Architecture must complete a 12-week internship at a Landscape Architecture Office before starting their Master's thesis.

Where do our students come from?



IMLA students Weihenstephan 2015 – 2017

29 students from 20 different nations



IMLA students Nürtingen 2017 – 2019

28 students from 19 different nations



IMLA students Weihenstephan 2018 – 2020

29 students from 19 different nations



IMLA students Nürtingen 2019 – 2021

25 students from 15 different nations



IMLA students Weihenstephan 2020 – 2022

38 students from 20 different nations



Project sites since 2001

in 15 different countries



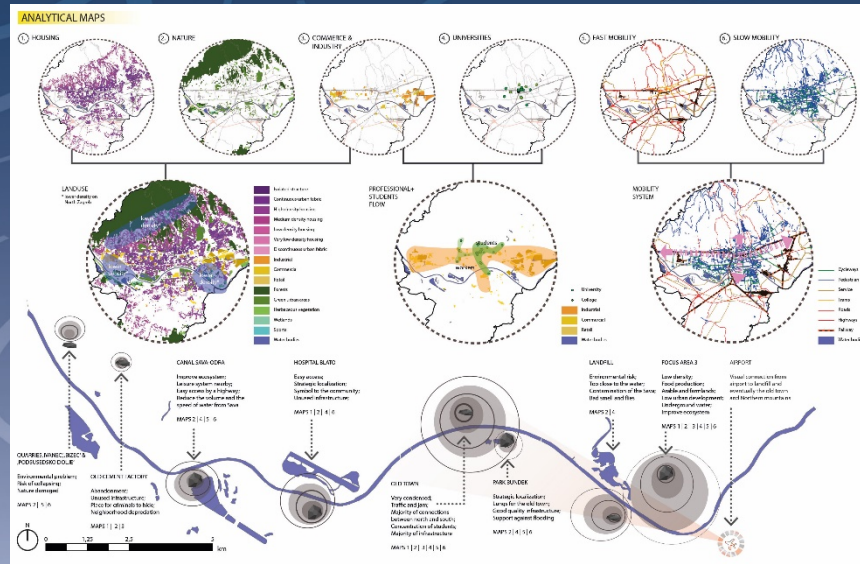
International projects / cooperation with partner universities



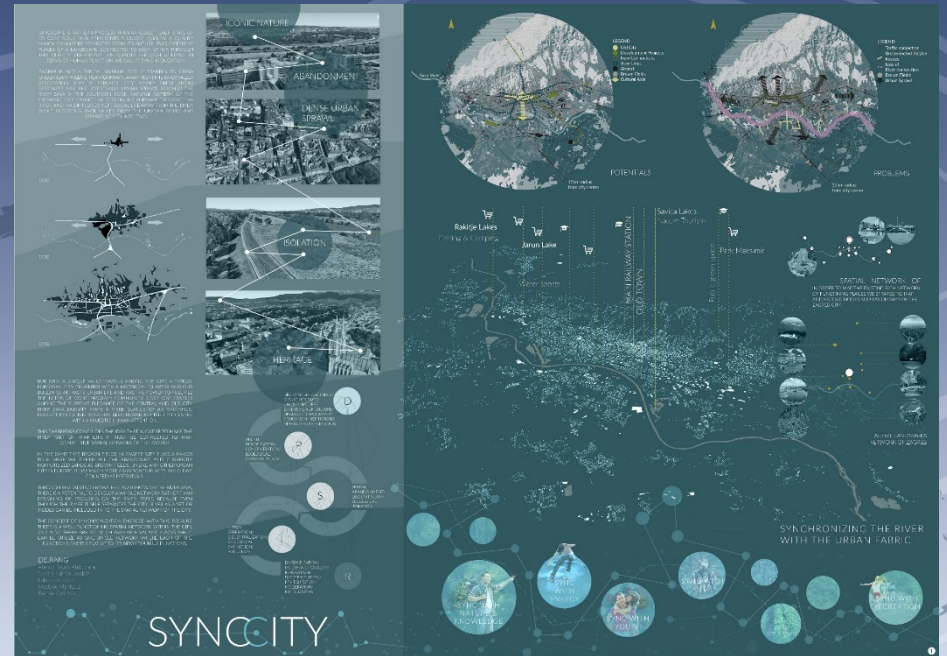
- 2010: Bratislava (Slovakia)
- 2011: Targu Mures (Romania) with Corvinus University Budapest
- 2012: Cape Town (South Africa) mit University of Cape Town
- 2013: Bucharest (Romania) with Ion Mincu University Bucharest
- 2014: Bruxelles (Belgium) with Université Libre Buxelles
- 2015: Sarajevo (Bosnia) and Romania (2 groups)
- 2016: Sarajevo (Bosnia)
- 2017: Sighisoara/Schäßburg (Siebenbürgen, Romania), Bergamo (Italy)
- 2018: Mangalia (Romania, Black Sea), Bergamo (Italy), Zagreb (Croatia)
- 2019: Tallinn (Estonia), Napoli (Italy), Pula (Croatia), Bratislava (Slovakia)
- 2020: De Panne (Belgium), Düsseldorf (Germany), Gdansk (Poland)



Main Project II (winter term 2018/19): LEARNING LANDSCAPES – Zagreb Futurescapes (Croatia)



<<< 'The Ripple Effect', Team: Bruna Spagnol,
Ho Sin Yee, Ivan Oskian, Rana Shukayr



,SYNCCITY' >>>
Team: Sudara Jayalath, Lubna
Mansour, Ahmed Ragab Abdelhafaz,
Mastaneh Mahfouzi, Rashad Gasimov

1. PLAYGROUND
2. SPORTS FIELD
3. WALKING PATH
4. BICYCLE PATH
5. WALKING PATH
6. BICYCLE PATH
7. WALKING PATH
8. BICYCLE PATH
9. WALKING PATH
10. BICYCLE PATH



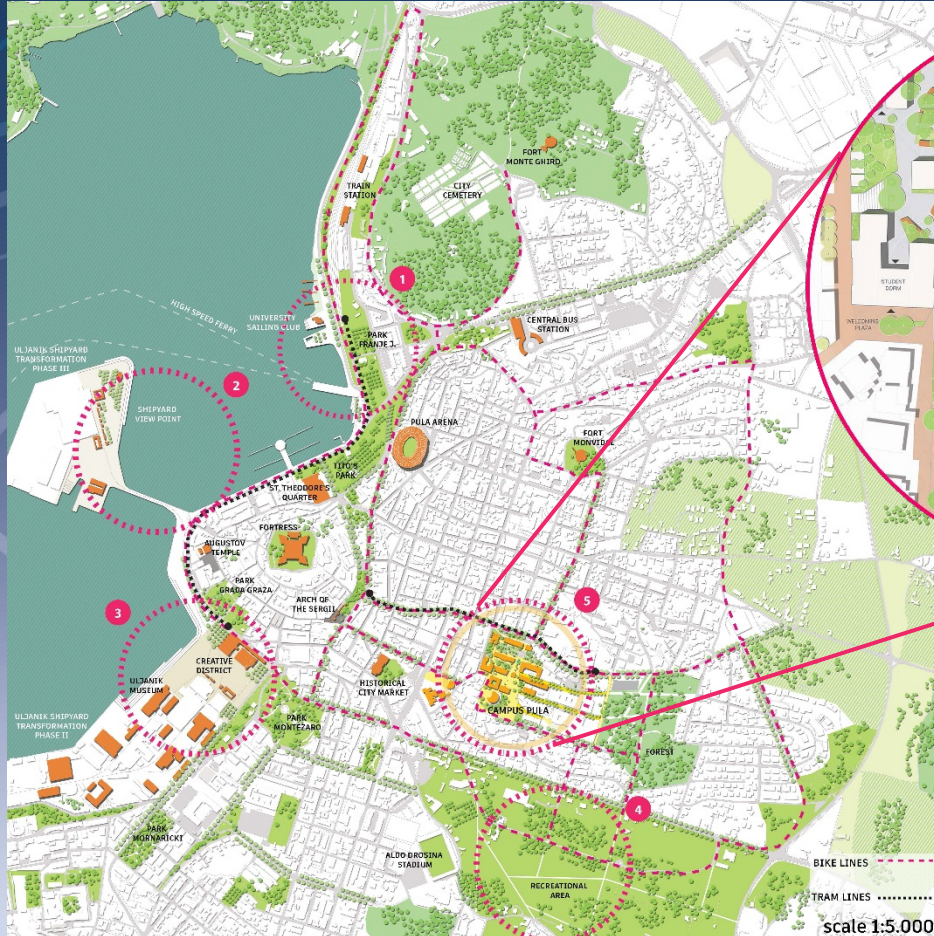
<< 'Parco Divario'
(left), Team:
Luis Aquino,
Sarah Jankowski,
Mariana
Martinez Cairo,
Abhishek Passan

<< 'Spectrum'
(right), Team:
Asif Adnan,
Patrizia Eben,
Jonas Löhle

Main Project II (winter term 2019/20): CAMPULA – University Campus Pula (Croatia)



'INTERFACE'
Team:
Darja Korjukina,
Majeda Khatun,
Rahnuma Ahmad
Tahiti,
Göksen Ezgi Boz



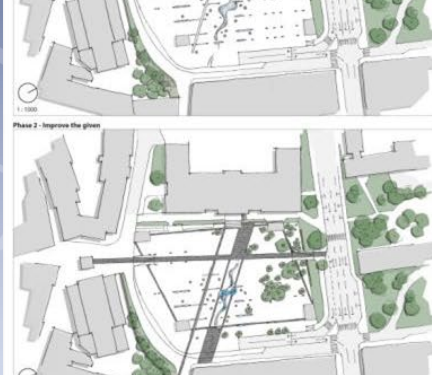
Awards and competition winners



bdla Bavaria Award 2015
'Best Master's Thesis'

for

Yudi Gao-Köhler and Leon Plahuta:
'Impossible Landscapes'



Awards and competition winners



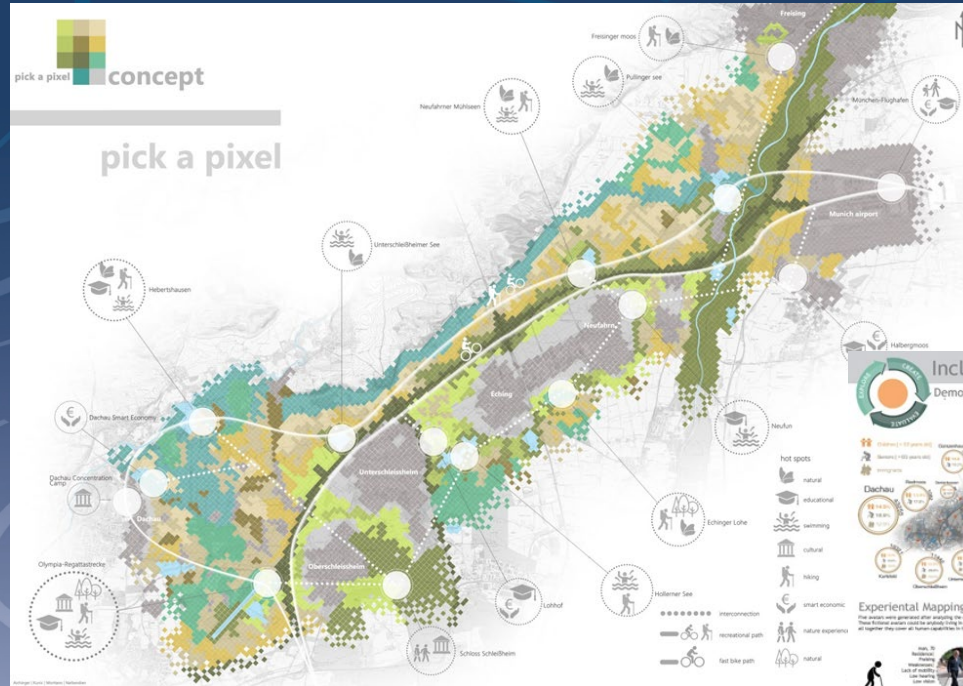
bdla Bavaria Award 2017
'Best Master's Thesis'

for

Klaudia Jaskula:
'Lost Rivers in Lodz'



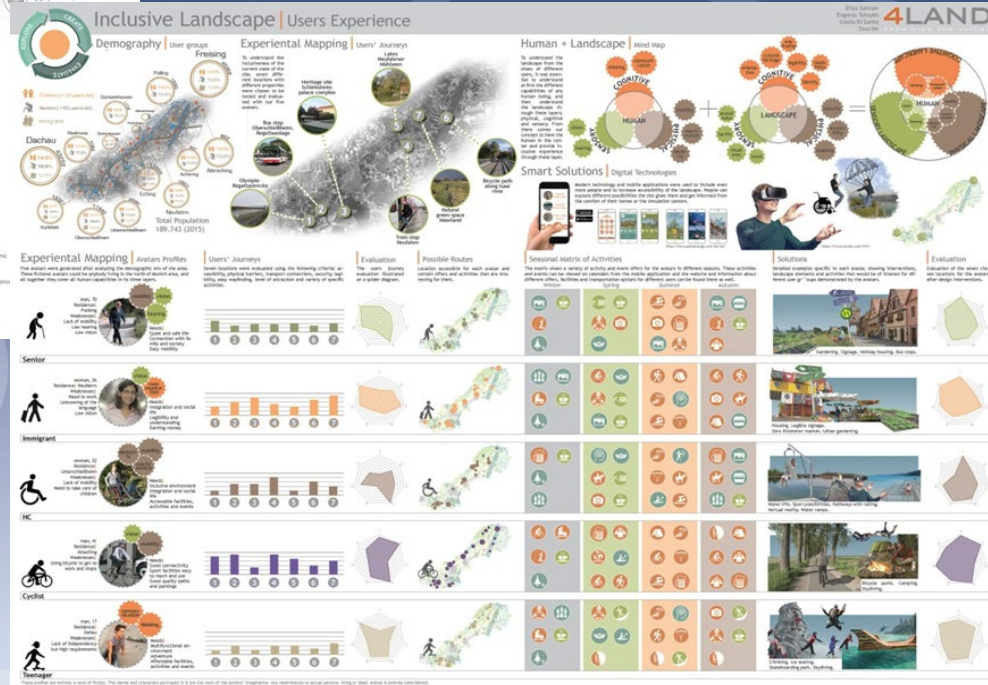
Awards and competition winners



LE:NOTRE Landscape Forum 2017 Students' Competition 'All Inclusive!? Upgrading Munich's Northern Fringe'

**4th price
Team:**
Reingard Aichinger,
Azra Kunic,
Fernando Montaña
Chavez,
Ani Nalbandian

**1st price
Team:**
Eliza Salman,
Evgeniia Telnykh,
Giada Di Sante,
Ziou He



Awards and competition winners



LE:NOTRE Landscape Forum 2020
Students' Competition 'Cross-Border Landscapes'
(Slovakia/Austria/Hungary)

2nd price

Team:

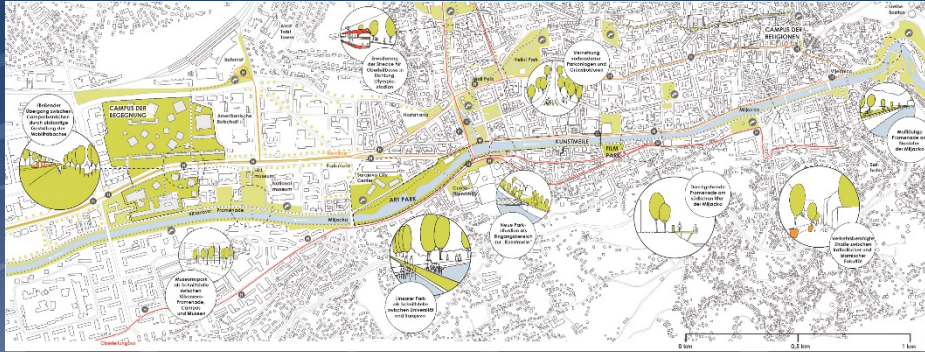
Chiara Loffredi,
Foysal Md. Azizul
Karim,
Ho Ching Leung,
Shaurav Paul



Awards and competition winners



bdla Bavaria Award 2020
,Best Master's Thesis' for two IMLA students:



Sarah Jankowski (left):
,Sarajevo - The City as a Campus
Universities as Impulses for
Sustainable Urban Development'

Raphaela Roming (right):
,Climate responsive Design –
Klimagerechte Landschaftsarchitektur'



Interest?



Start:	Every summer term (15 March)
Application deadline:	15 November
Requirements:	Bachelor's degree in Landscape Architecture or related disciplines, average better than 2,5
Further criteria:	Content relevance of the Bachelor's thesis, relevant professional experience, portfolio Students with a 3-year degree or a degree other than Landscape Architecture must complete a 12-week internship in the 3 rd semester.
Teaching language:	English, Level B2 (CEFR) is to be verified
Learn more:	www.imla-campus.eu



imla 2022 wants you!

Apply by 15 November 2021 for a start
in March 2022 in Freising-Weihenstephan
(or by 15 November 2022 for a start
in March 2023 in Nürtingen)

