

Short Projects 2nd Trimester

Projects for Banská Štiavnica

IMLA 2009 | Nürtingen-Geislingen University | Weihenstephan-Triesdorf University | Rapperswil University

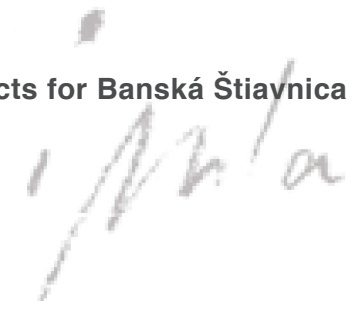
Golden And Silver Corridors | Lars Wolfer | Chinyi Gu | Agnieszka Gorniak | Juliana Aschwanden

Hand In Hand Project | Sofia Lopez | Denise Ascione | Christoph Dankers

Landscape As A Goldmine | Roman Häne | Nils Pudewills | Louis Wenger

Strategic Toolbox For Banská Štiavnica | Franziska Schüller | Martina Tuda | Yvonne Keller

Turning The Outside In | Turning The Inside Out | Markus Peter



Annotation

All works presented in this documentation were part of the second Trimester organised by one of the three Schools of the International Master of Landscape Architecture (IMLA), the Weihenstephan University of Applied Sciences, South - Germany.

The aim is to give an overview over all five projects worked out for the Slovakian City of Banská Štiavnica.

So, all works were shortened and missing parts or sentences were marked by brackets "[...]".

Each work contains an imprint where more information about authors and sources can be found.

Project Facts

2nd Trimester | 25th May till 31th July 2009

Exkursion Slovakia | 15th June till 28th June 2009

1st week in Weihenstephan | introduction and workshops

2nd week in Slovakia | Bratislava, Banská Štiavnica

First Presentation in Banská Štiavnica City Council | 26th June 2009

Final Presentation | 30th June 2009

Assignments finish | 21th August 2009

Final Presentation

Documentation of each project

1/2/2/a

Location

Banská Štiavnica (German: Schemnitz; Hungarian: Selmecebánya).

It is a small and charming city consisting of five districts which are situated in the West Carpathian Mountains. The city is located in the south part of Slovakia; in the so called Pohronie Region. In 1993, it was designated as cultural UNESCO World Heritage.

Inhabitants (2006): 11.000

Area: 46,74 m²

Population density: 228 in/km²

Altitude: 600 m above sea level

Geographical information: 48° 28' N, 18° 54' O

Website: www.banskastiavnica.sk



History

Gothic times, Renaissance, Mining Academy, Austrians and Hungarians, Turks and the gallery-system of Glanzenberg are some terms which formed the history of the city. Banská Štiavnica was the most important mining city in Slovakia since the 13th century. The excavation of gold and silver forms the economical, social and political development for centuries and also influences the appearance of the city.

Besides, this goes along with outstanding engineer and scientific work which can be seen in the city itself and its near surrounding. So, the city is designated as UNESCO World Heritage under the title "Historic Town of Banská Štiavnica and the Technical Monuments in its vicinity".

Important monuments and historical sites

The surrounding landscape is characterised by a high percentage of forest and grassland.

There are less agricultural and farming activities which could cause problems to keep the ecologically valuable land open in the next decades.

Typical for Banská Štiavnica is the mixed and fragmented structure: Well developed traffic routes are connected with small paths, restored buildings are located next to degenerated ones, the historical centre flows into an amazing landscape, World Heritage stands in contrast to derelict panel housing and run-down Roma settlements.

The Calvari Mountain is the most important site with its baroque church on its concise top.

1/2/3/a



1/2/3/a



Linking the urban context

Golden and Silver Corridor



IMLA

sdc
studio

HAND **IN** HAND project

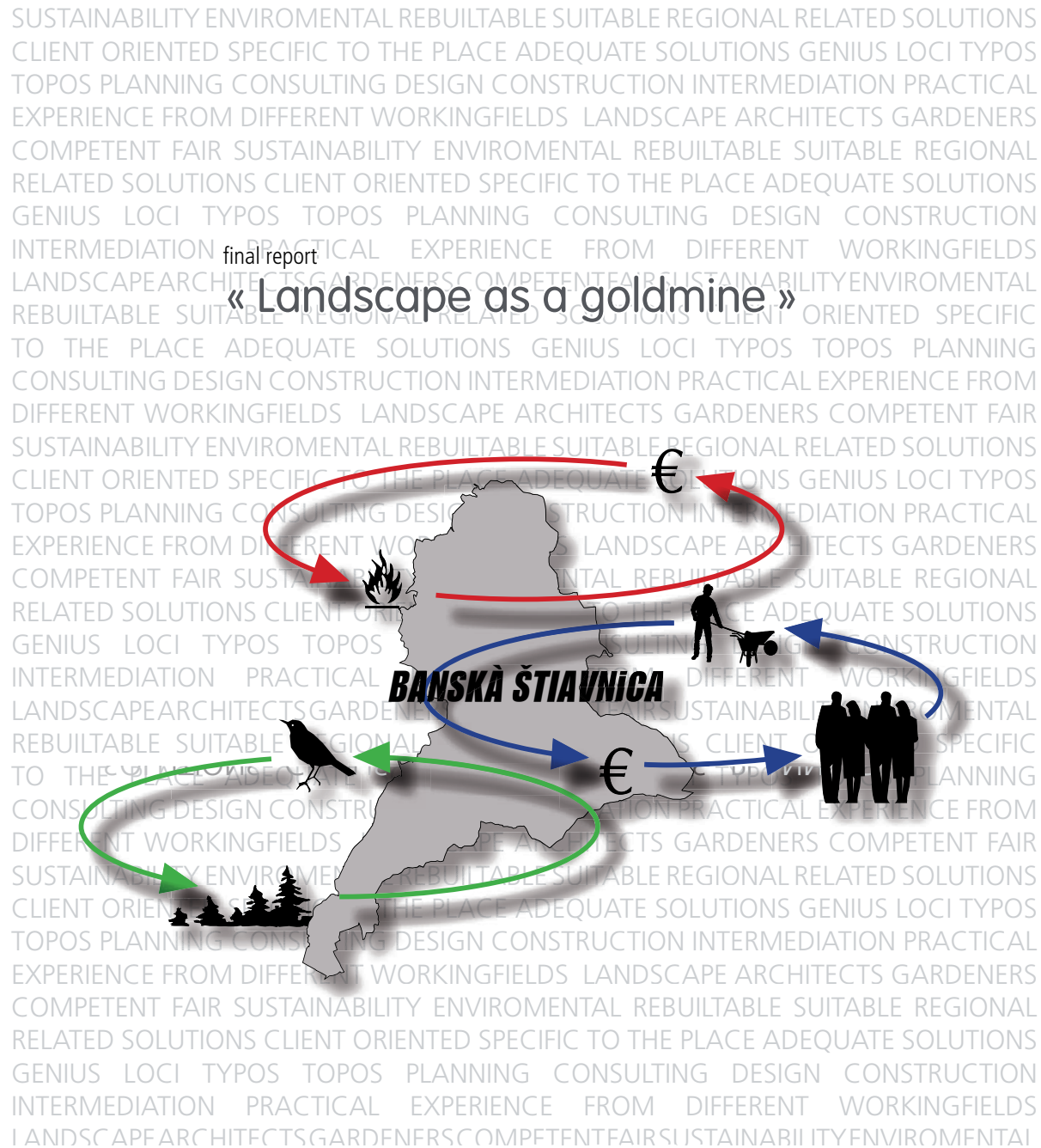
A NEW IDENTITY FOR THE LOCAL ROMA COMMUNITY IN BANSKA STIAVNICA
Short project - IMLA 2009 - sofia lopez. denise ascione. christoph dankers.

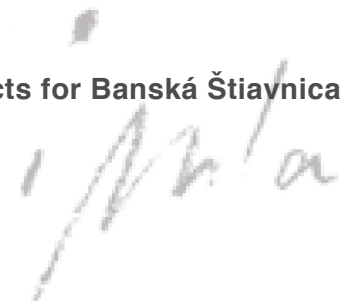


1/2/3/4

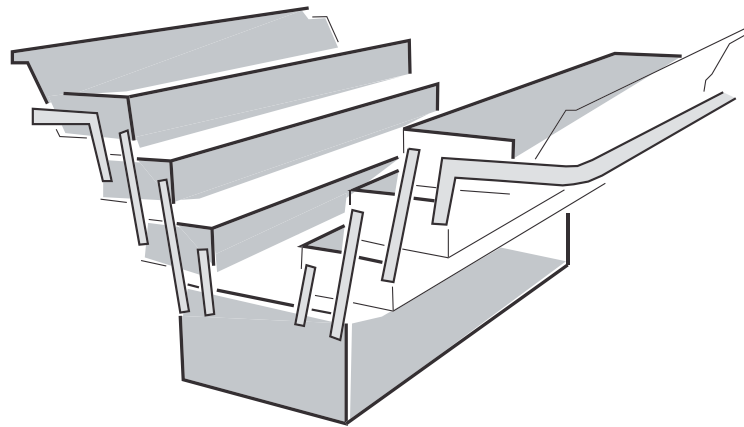
final report

«Landscape as a goldmine»

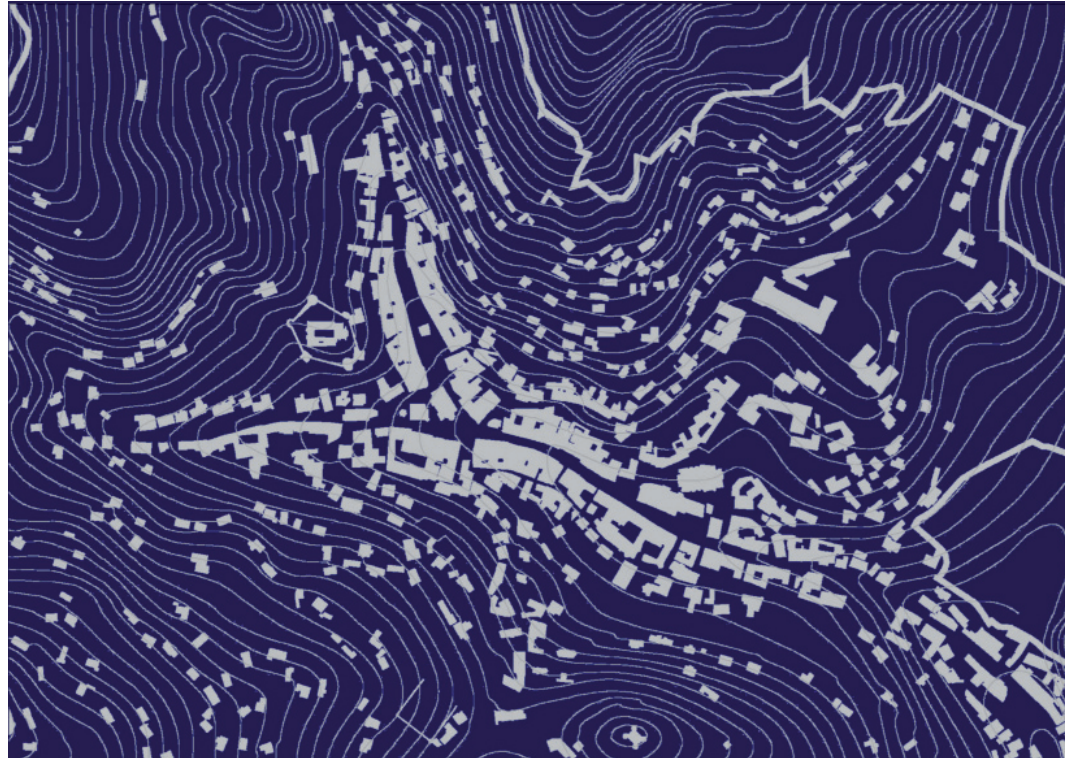




Strategic Toolbox for Banská Štiavnica

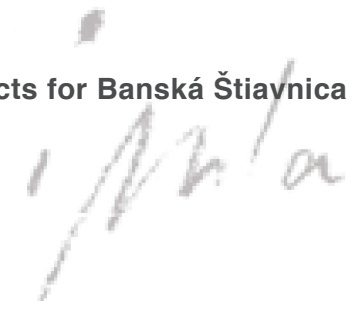


1/2/3/4



BANSKÁ ŠTIAVNICA
Turning the outside in
Turning the inside out

Possibilities of sanitation measures in the city of Banská Štiavnica



Imprint

Documentation of five projects concerning the 2nd Trimester of the
International Master of Landscape Architecture (IMLA) | Summer 2009.

For more information about IMLA

HSR University of Applied Sciences, Switzerland
www.hsr.ch

Nürtingen - Geislingen University of Applied Sciences, Germany
www.hfwu.de

Weihenstephan University of Applied Sciences, Germany.
www.hswt.de

International Master of Landscape Architecture
www.imla-campus.eu

Students

Agnieszka Gorniak | Christoph Dankers | Denise Ascione |
Franziska Schüller | Juliana Aschwanden | Lars Wolfer | Louis
Wenger | Markus Peter | Martina Tuda | Nils Pudewills |
Qinyi Gu | Roman Häne | Sofia Lopez | Yvonne Keller

Supervisors

Prof. Dr. Frieder Luz | Prof. Christoph Jensen
Weihenstephan University of Applied Sciences

Documentation by

Franziska Schüller | Martina Tuda

Rapperswil | September 2009.